

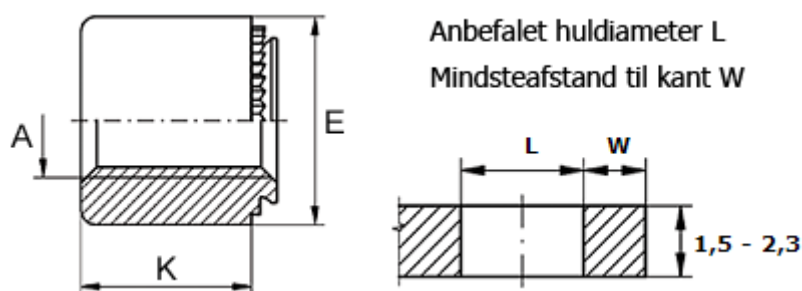
Data Sheet



Article number: 12506800340100

Description: KLEE-coil 506 800 340.100
M4 Hardened, zinc-pl. & chr. yellow

Measures



Female thread A	= M4
Height K	= 6
Min distance to edge	= 4.0
Outer diameter E	= 8
Plate thickness	= from 2.4
Recommended bore diameter +0.05	= 5.00